

PLAN NORTH  
TRUE NORTH

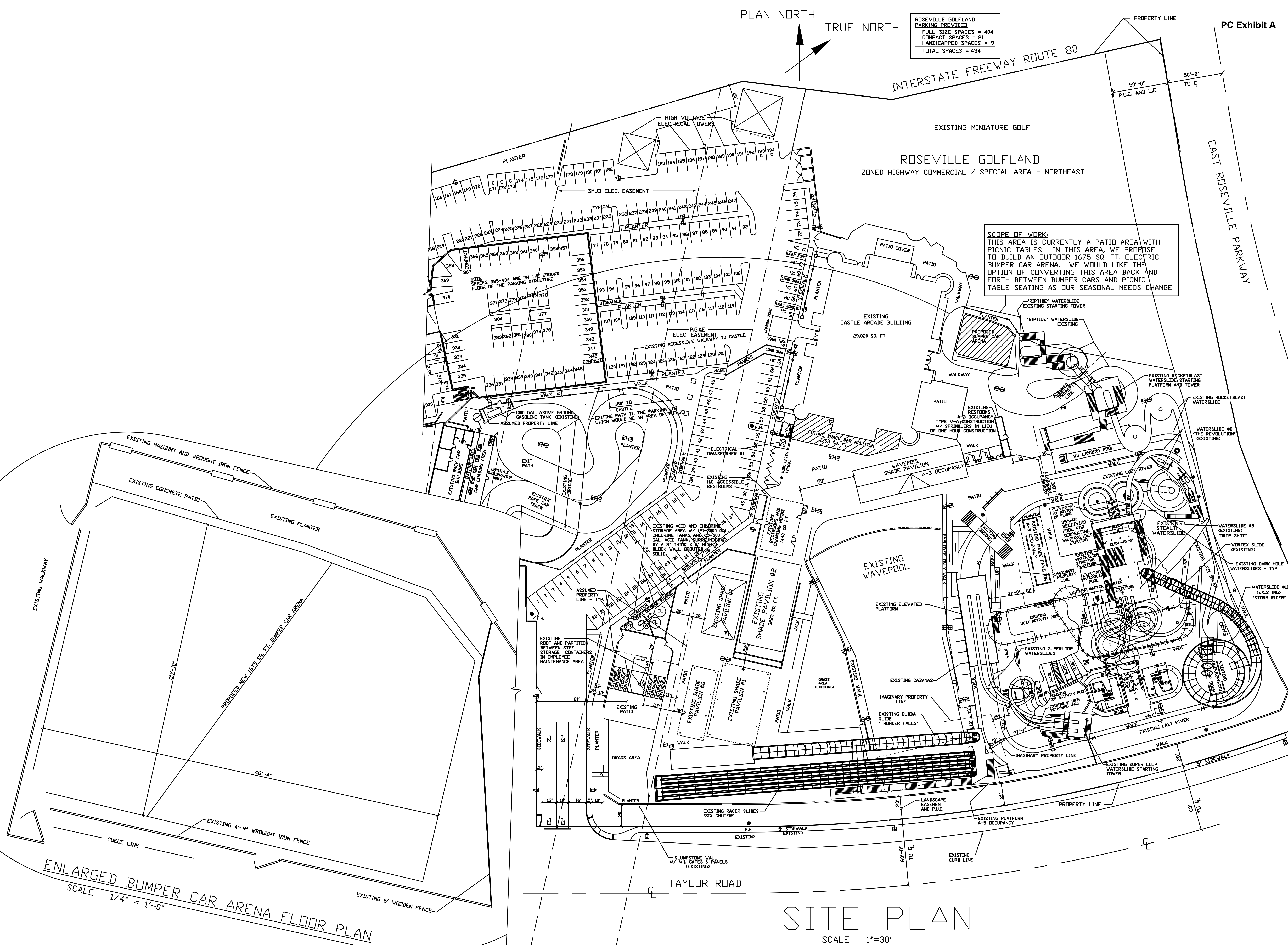
ROSEVILLE GOLFLAND  
PARKING PROVIDED  
FULL SIZE SPACES = 404  
COMPACT SPACES = 21  
HANDICAPPED SPACES = 9  
TOTAL SPACES = 434

PC Exhibit A

INTERSTATE FREEWAY ROUTE 80

ROSEVILLE GOLFLAND  
ZONED HIGHWAY COMMERCIAL / SPECIAL AREA - NORTHEAST

SCOPE OF WORK:  
THIS AREA IS CURRENTLY A PATIO AREA WITH  
PICNIC TABLES. IN THIS AREA, WE PROPOSE  
TO BUILD AN OUTDOOR 1675 SQ. FT. ELECTRIC  
BUMPER CAR ARENA. WE WOULD LIKE THE  
OPTION OF CONVERTING THIS AREA BACK AND  
FORTH BETWEEN BUMPER CARS AND PICNIC  
TABLE SEATING AS OUR SEASONAL NEEDS CHANGE.



ENLARGED BUMPER CAR ARENA FLOOR PLAN  
SCALE 1/4" = 1'-0"

SITE PLAN  
SCALE 1" = 30'

BY	DESCRIPTION	DATE	REV.
	C:\AROSE\RC_ARENA\R_SIC_U\FBK	7-27-20	-
ROSEVILLE GOLFLAND - USE PERMIT MODIFICATION 2020			
ROSEVILLE GOLFLAND 1893 TAYLOR ROAD ROSEVILLE, CALIF. 95661			
EJNSE INC. 9718 FAIR OAKS BLVD., SUITE A FAIR OAKS, CA 95628 PH. (916) 966-5400			
EDWIN J. NICHOLSON SE 3336			
GOLFLAND ENTERTAINMENT CENTERS, INC. FRED KENNEY 1893 TAYLOR ROAD ROSEVILLE, CA 95661 PH. (916) 784-1273			
SHEET 1			
SITE PLAN			